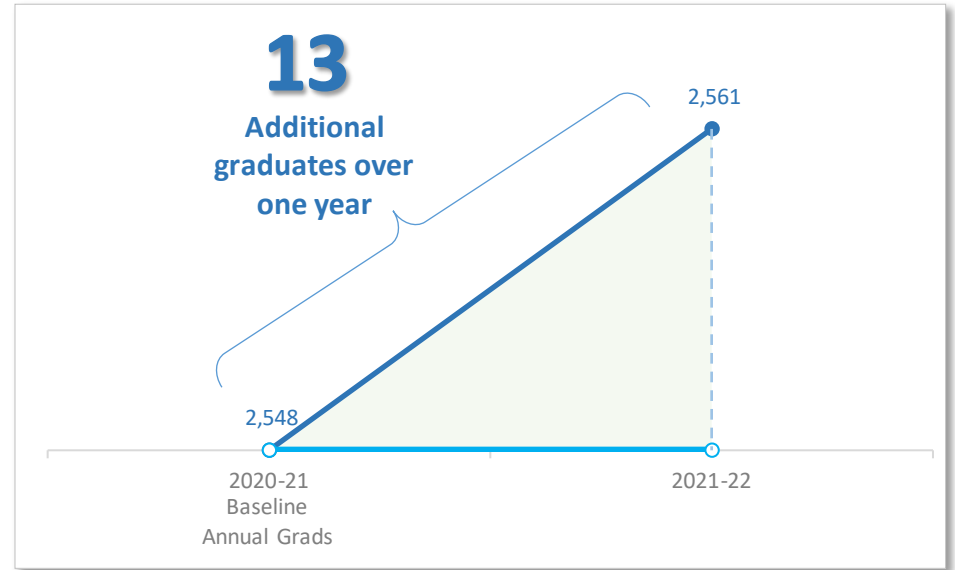


UMBC

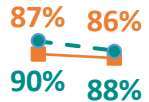
Annual Bachelor Degree Graduates

	2020-21	2021-22	% Change
All	2,548	2,561	↑ 1%
Under-Rep Students of Color	834	829	↓ -1%
Low Income	831	824	↓ -1%



Freshmen Progress 2020-21, Retention & Graduation Rates 2020-21 to 2021-22

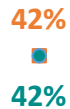
FTIC 1st-to-2nd Yr Retention



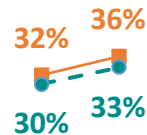
30-Hour 1st Yr Freshmen Progress



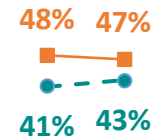
60-Hour 2nd Yr Freshmen Progress



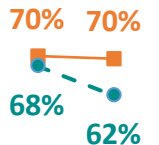
90-Hour 3rd Yr Freshmen Progress



4-Year FTIC Graduation



6-Year FTIC Graduation



* 2021-22 progression rates update pending *

— All Students — Low-Income

○.....Low-income achievement gap in 2020-21 for retention and in 2021-22 for retention & graduation metrics.....○

2%

-5%

0%

-2%

-5%

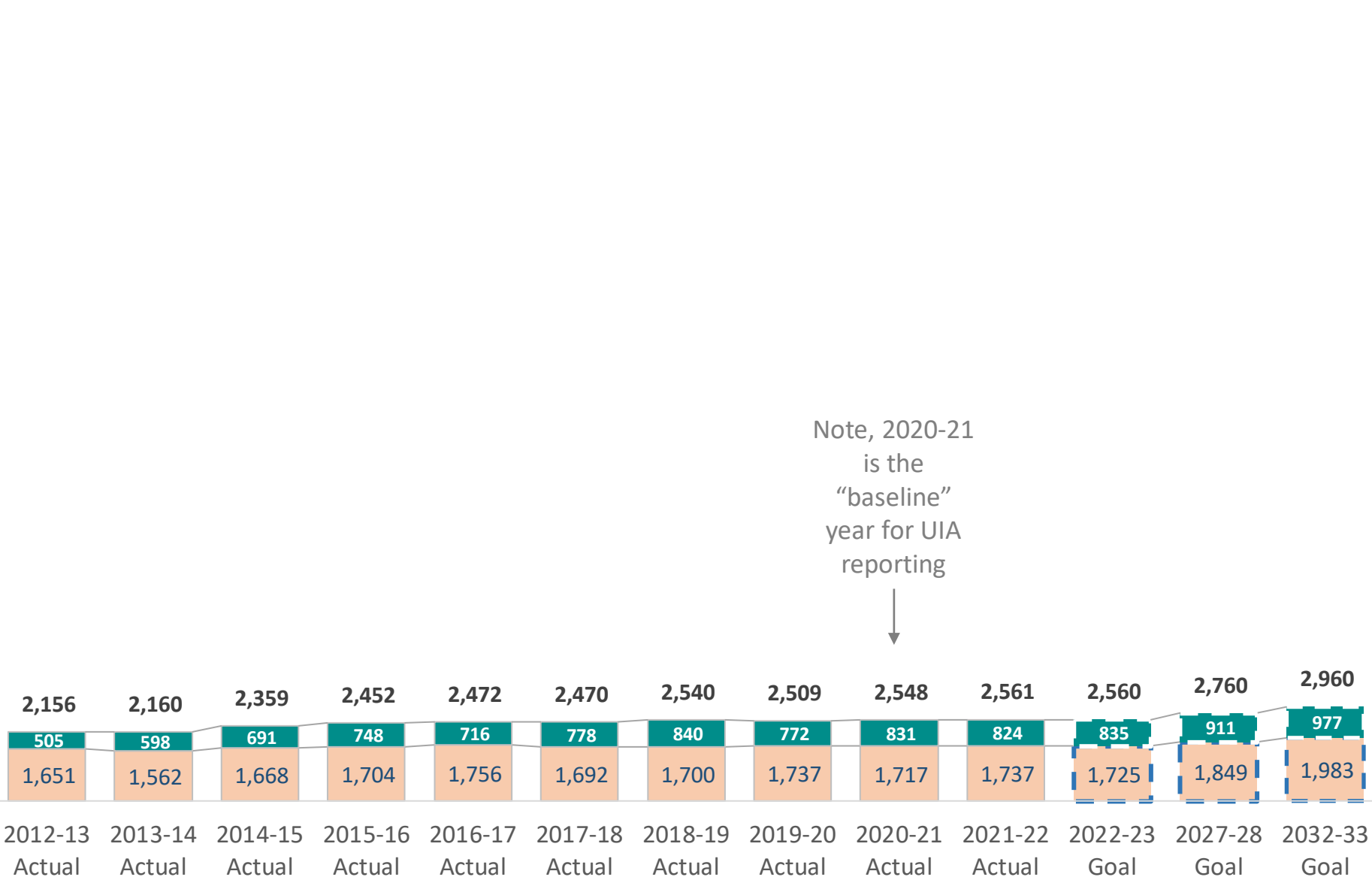
-8%

UMBC

Number of Annual Baccalaureate Graduates

■ Mid-High Income Students
■ Low Income Students

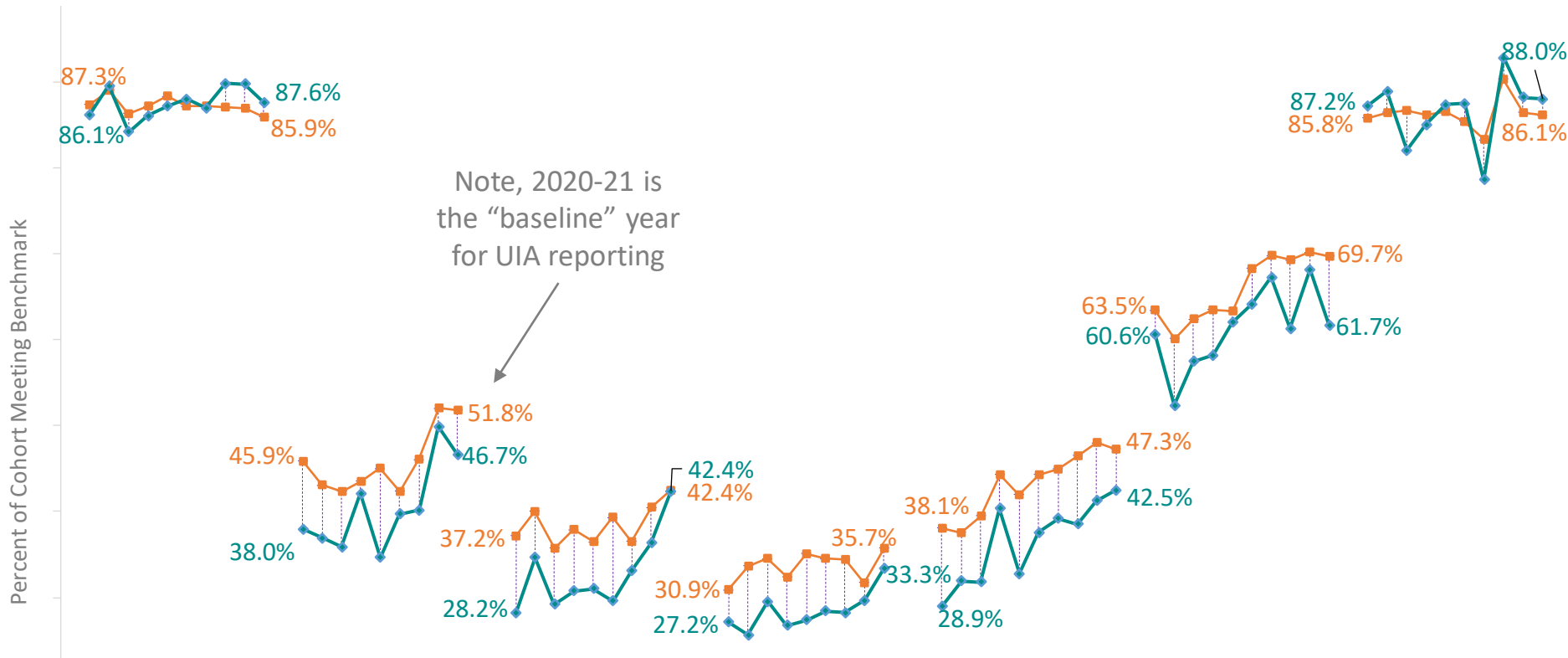
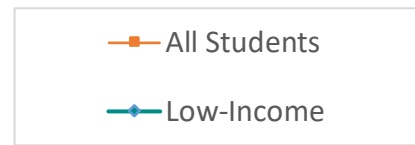
Number of Annual Graduates by Family Income Level



UMBC

Retention, Progress, and Graduation Rates

2021-22 Freshmen progress rates are pending



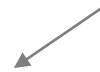
Gap between low income and all students:

-1.2%	-1.2%	1.7%	-7.9%	-10.4%	-5.2%	-8.9%	-5.4%	0.0%	-3.7%	-7.7%	-2.4%	-9.2%	-9.2%	-4.8%	-2.9%	-1.3%	-8.0%	1.4%	0.8%	1.9%
2012-13	2016-17	2021-22	2012-13	2016-17	2020-21	2012-13	2016-17	2020-21	2012-13	2016-17	2020-21	2012-13	2016-17	2021-22	2012-13	2016-17	2021-22	2012-13	2016-17	2021-22
FTIC 1st-to-2nd Year Retention			30-Hour 1st Year Freshmen Progress			60-Hour 2nd Year Freshmen Progress			90-Hour 3rd Year Freshmen Progress			4-yr FTIC Graduation Rate			6-yr FTIC Graduation Rate			Transfer (>60 credits) Retention		

UMBC Total

UMBC Metrics by Race/Ethnicity

Note, 2020-21 is the “baseline” year for UIA reporting



UMBC Graduates

	2012-13	2013-14	2014-15	2015-16	2016-17	2017-18	2018-19	2019-20	2020-21	2021-22	% Change
All Students	2,156	2,160	2,359	2,452	2,472	2,470	2,540	2,509	2,548	2,561	1%
Am. Native / Pac. Islander	9	8	12	13	11	10	14	12	5	3	-40%
Asian	429	439	473	479	504	536	564	530	555	581	5%
Black or African Am.	336	298	402	394	407	408	427	448	480	474	-1%
Hispanic/ Latino	102	119	128	134	159	182	184	189	234	233	0%
Two or more races	45	54	57	68	81	85	89	99	115	119	3%
White	1,114	1,104	1,111	1,172	1,144	1,078	1,085	1,052	984	983	0%
Unknown / Non-Res	121	138	176	192	166	171	177	179	175	168	-4%

% Increase represents change from 2020-21 to 2021-22 value

Total Retention & Progression

The following slides contain a series of tables and charts for each UIA retention and progression metric by Race/Ethnicity. Please note the following:

- 1) Please see metric definitions provided on the last slide.
- 2) In cases where all cohorts across all years are less than 50, the data row has been deleted from the table and chart.
- 3) In cases where any cohort is below 100, the table contains an indicator flag noting small cohort size.
- 4) Data excluded from charts: Metrics with any cohort year below 50, Nonresident Aliens, and Unknown race.
- 5) The axis values on charts has been determined in order to facilitate slide-by-slide comparisons.

UMBC Freshmen Retention, Graduation, and Progression Rates

Note, 2021-22 is the “baseline” year for UIA reporting



Baseline

UMBC	Metric	Notes	2012-13	2013-14	2014-15	2015-16	2016-17	2017-18	2018-19	2019-20	2020-21	2021-22	Change
All Students	1st-yr FTIC Retention		87.3%	89.0%	86.3%	87.2%	88.3%	87.2%	87.2%	87.0%	87.0%	85.9%	-1.1%
	4-yr FTIC Graduation Rate		38.1%	37.6%	39.5%	44.3%	41.9%	44.3%	44.9%	46.5%	48.0%	47.3%	-0.7%
	6-yr FTIC Graduation Rate		63.5%	60.1%	62.4%	63.5%	63.3%	68.3%	69.8%	69.2%	70.2%	69.7%	-0.5%
	30-hr FTIC Progress		45.9%	43.1%	42.4%	43.5%	45.0%	42.4%	46.1%	52.0%	51.8%		
	60-hr FTIC Progress		37.2%	40.0%	35.8%	37.9%	36.4%	39.3%	36.6%	40.5%	42.4%		
	90-hr FTIC Progress		30.9%	33.7%	34.5%	32.4%	35.1%	34.5%	34.5%	31.7%	35.7%		
Am.Native/ Pac.Islander	1st-yr FTIC Retention	Cohort < 50	*	*	*	*	*	*	*	*	*	*	*
	4-yr FTIC Graduation Rate	Cohort < 50	*	*	*	*	*	*	*	*	*	*	*
	6-yr FTIC Graduation Rate	Cohort < 50	*	*	*	*	*	*	*	*	*	*	*
	30-hr FTIC Progress	Cohort < 50	*	*	*	*	*	*	*	*	*	*	*
	60-hr FTIC Progress	Cohort < 50	*	*	*	*	*	*	*	*	*	*	*
	90-hr FTIC Progress	Cohort < 50	*	*	*	*	*	*	*	*	*	*	*
Asian	1st-yr FTIC Retention		91.1%	90.2%	85.3%	91.2%	91.7%	92.2%	91.3%	90.3%	87.6%	87.2%	-0.3%
	4-yr FTIC Graduation Rate		36.9%	38.9%	40.8%	43.8%	41.6%	42.3%	50.5%	48.2%	49.0%	50.3%	1.3%
	6-yr FTIC Graduation Rate		60.1%	58.6%	63.1%	64.6%	64.8%	74.8%	71.0%	68.6%	77.3%	73.0%	-4.3%
	30-hr FTIC Progress		44.6%	40.3%	38.7%	48.7%	47.9%	45.3%	44.2%	50.7%	55.9%		
	60-hr FTIC Progress		34.6%	40.4%	32.7%	38.2%	38.5%	40.2%	35.3%	39.4%	45.8%		
	90-hr FTIC Progress		31.4%	34.3%	35.5%	30.7%	36.2%	38.2%	32.8%	32.7%	39.6%		
Black or African Am.	1st-yr FTIC Retention		93.3%	94.6%	92.4%	85.9%	91.0%	86.9%	89.5%	88.6%	87.5%	88.8%	1.3%
	4-yr FTIC Graduation Rate		33.8%	33.9%	40.0%	39.6%	40.5%	37.4%	39.0%	38.9%	48.1%	43.6%	-4.6%
	6-yr FTIC Graduation Rate		64.8%	59.3%	66.2%	59.3%	61.2%	66.5%	72.4%	71.7%	69.7%	64.0%	-5.7%
	30-hr FTIC Progress		53.7%	51.9%	43.4%	42.7%	39.3%	43.8%	49.7%	55.4%	47.6%		
	60-hr FTIC Progress		39.4%	44.5%	36.8%	33.8%	38.2%	30.3%	36.4%	41.2%	47.2%		
	90-hr FTIC Progress		32.8%	34.7%	42.1%	34.6%	34.3%	34.0%	30.8%	33.3%	36.5%		

Change represents the difference between the 2021-22 and 2020-21 (baseline) values for retention and graduation rates; 2021-22 update for progress rates are pending

UMBC Freshmen Retention, Graduation, and Progression Rates, Continued

Note, 2021-22 is the
"baseline" year for UIA
reporting

Baseline



UMBC	Metric	Notes	2012-13	2013-14	2014-15	2015-16	2016-17	2017-18	2018-19	2019-20	2020-21	2021-22	Change
Hispanic/ Latino	1st-yr FTIC Retention		82.9%	86.9%	83.0%	89.9%	88.9%	83.5%	82.6%	87.9%	83.3%	82.1%	-1.2%
	4-yr FTIC Graduation Rate		28.6%	25.4%	31.4%	43.4%	39.3%	36.2%	40.5%	46.3%	42.5%	37.7%	-4.8%
	6-yr FTIC Graduation Rate		57.1%	43.3%	53.1%	57.1%	62.7%	67.1%	66.7%	58.5%	68.4%	68.5%	0.2%
	30-hr FTIC Progress		40.8%	42.9%	34.0%	41.8%	39.8%	44.9%	39.1%	49.1%	49.0%		
	60-hr FTIC Progress		25.5%	39.5%	39.3%	31.9%	31.6%	28.7%	40.9%	34.8%	31.0%		
	90-hr FTIC Progress		23.8%	25.5%	28.9%	32.1%	34.0%	36.7%	33.3%	30.7%	26.1%		
Two or more races	1st-yr FTIC Retention		82.9%	85.3%	85.9%	82.5%	88.2%	87.5%	88.1%	85.8%	85.7%	83.0%	-2.7%
	4-yr FTIC Graduation Rate			29.6%	23.8%	34.3%	38.7%	43.8%	36.5%	44.7%	47.9%	40.4%	-7.5%
	6-yr FTIC Graduation Rate	Cohort < 100				59.3%	55.6%	60.0%	66.7%	67.2%	65.1%	65.8%	0.7%
	30-hr FTIC Progress		44.3%	37.3%	48.4%	41.3%	44.7%	32.3%	42.2%	44.3%	45.9%		
	60-hr FTIC Progress		27.0%	38.6%	29.3%	39.1%	27.0%	35.5%	29.2%	37.6%	32.1%		
	90-hr FTIC Progress		25.9%	25.4%	27.1%	32.0%	32.8%	28.6%	34.2%	27.1%	35.8%		
White	1st-yr FTIC Retention		85.7%	87.3%	85.3%	85.9%	85.7%	85.3%	85.0%	83.6%	87.1%	84.6%	-2.5%
	4-yr FTIC Graduation Rate		41.0%	40.4%	42.2%	45.2%	43.7%	49.0%	46.2%	48.1%	49.0%	50.6%	1.6%
	6-yr FTIC Graduation Rate		66.2%	62.5%	62.4%	65.5%	63.6%	66.6%	68.7%	70.7%	67.6%	70.5%	2.9%
	30-hr FTIC Progress		44.3%	43.3%	44.3%	42.9%	45.9%	41.0%	48.0%	52.6%	51.6%		
	60-hr FTIC Progress		40.6%	37.8%	37.9%	39.2%	37.2%	43.4%	38.0%	42.8%	41.0%		
	90-hr FTIC Progress		32.0%	35.6%	31.7%	33.6%	35.7%	33.7%	37.1%	31.3%	34.9%		
Unknown / Non-Res	1st-yr FTIC Retention		83.7%	90.3%	87.8%	85.2%	87.7%	81.1%	82.5%	92.9%	87.0%	82.8%	-4.1%
	4-yr FTIC Graduation Rate		33.7%	32.1%	32.0%	51.0%	39.4%	40.8%	40.9%	46.6%	41.9%	38.8%	-3.1%
	6-yr FTIC Graduation Rate		54.0%	59.2%	56.8%	57.5%	62.6%	66.7%	72.1%	67.3%	67.1%	67.1%	0.0%
	30-hr FTIC Progress		51.0%	42.4%	44.9%	37.6%	45.2%	40.5%	45.0%	57.1%	58.7%		
	60-hr FTIC Progress		33.3%	45.1%	34.5%	38.8%	32.9%	39.7%	33.8%	38.8%	47.1%		
	90-hr FTIC Progress		25.5%	28.6%	43.8%	29.7%	32.0%	30.9%	28.8%	32.4%	36.3%		

Change represents the difference between the 2021-22 and 2020-21 (baseline) values for retention and graduation rates;
2021-22 update for progress rates are pending

UMBC Transfers Retention Rates

Note, 2021-22 is the “baseline” year for UIA reporting

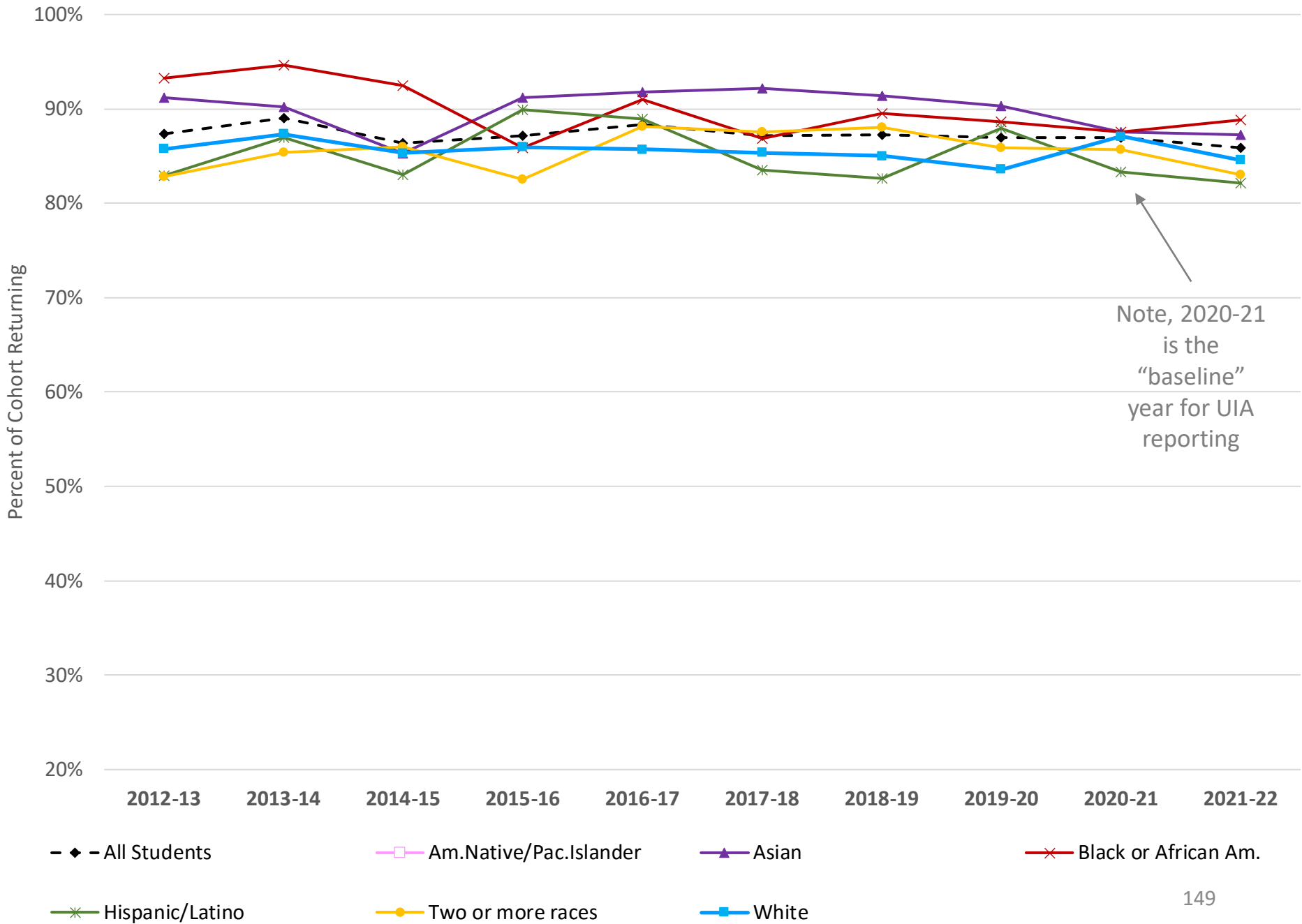
Baseline



UMBC	Metric	Notes	2012-13	2013-14	2014-15	2015-16	2016-17	2017-18	2018-19	2019-20	2020-21	2021-22	Change
All Students	Transfer (>60 credits) Retention		85.8%	86.4%	86.7%	86.2%	86.5%	85.4%	83.3%	90.4%	86.4%	86.1%	-0.3%
	Transfer (<60 credits) Retention		79.9%	84.1%	82.6%	84.4%	82.8%	83.3%	82.7%	83.8%	85.0%	82.3%	-2.7%
Am. Native/ Pac. Islander	Transfer (>60 credits) Retention	Cohort < 50	*	*	*	*	*	*	*	*	*	*	*
	Transfer (<60 credits) Retention	Cohort < 50	*	*	*	*	*	*	*	*	*	*	*
Asian	Transfer (>60 credits) Retention	Cohort < 100	100.0%	90.9%	91.7%	86.6%	90.9%	87.0%	85.7%	97.4%	92.2%	88.7%	-3.5%
	Transfer (<60 credits) Retention	Cohort < 100	86.1%	91.3%	92.9%	82.9%	81.1%	93.5%	82.4%	92.9%	95.2%	89.2%	-6.0%
Black or African Am.	Transfer (>60 credits) Retention	Cohort < 100	82.0%	84.5%	84.5%	87.0%	79.2%	81.4%	77.3%	90.5%	83.1%	83.5%	0.5%
	Transfer (<60 credits) Retention		78.8%	86.3%	80.8%	87.3%	81.4%	81.7%	81.5%	77.5%	85.5%	74.8%	-10.7%
Hispanic/ Latino	Transfer (>60 credits) Retention	Cohort < 100	87.1%	86.1%	73.3%	87.5%	89.1%	90.0%	92.5%	80.0%	79.2%	90.5%	11.2%
	Transfer (<60 credits) Retention	Cohort < 100	81.6%	78.8%	75.6%	90.9%	89.5%	84.0%	88.2%	83.6%	88.9%	84.5%	-4.4%
Two or more races	Transfer (>60 credits) Retention	Cohort < 50	*	*	*	*	*	*	*	*	*	*	*
	Transfer (<60 credits) Retention	Cohort < 50	*	*	*	*	*	*	*	*	*	*	*
White	Transfer (>60 credits) Retention		81.7%	85.2%	89.1%	84.7%	87.0%	87.7%	83.2%	89.5%	89.1%	82.5%	-6.6%
	Transfer (<60 credits) Retention		81.2%	83.3%	82.4%	80.9%	82.5%	80.6%	82.8%	84.6%	79.8%	82.5%	2.7%
Unknown / Non-Res	Transfer (>60 credits) Retention	Cohort < 100	86.8%	89.3%	87.1%	89.3%	86.5%	82.9%	83.0%	100.0%	82.4%	89.2%	6.8%
	Transfer (<60 credits) Retention	Cohort < 100	75.0%	83.1%	72.3%	88.7%	85.0%	85.4%	82.6%	79.5%	88.0%	81.1%	-6.9%

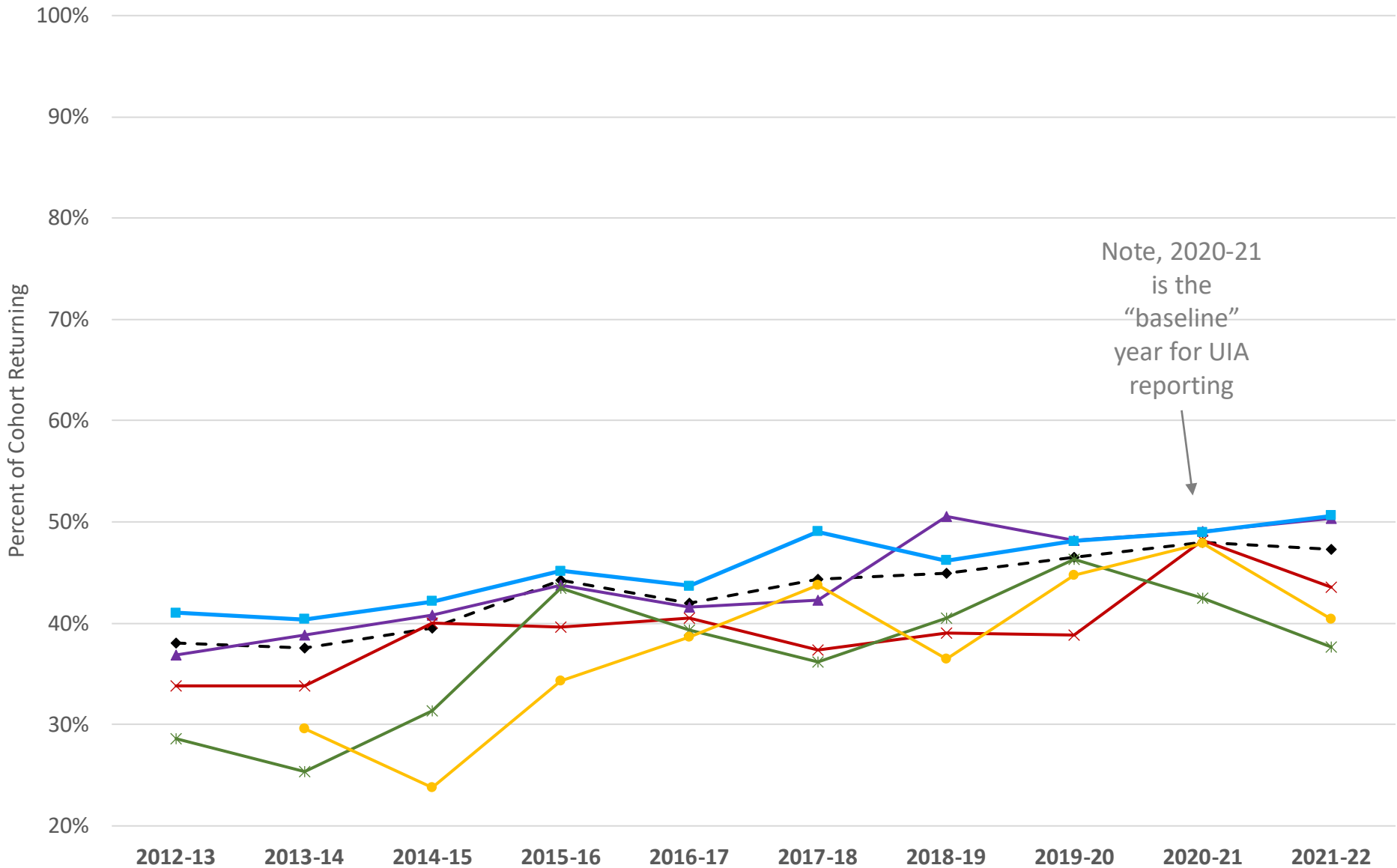
Change represents the difference between the 2021-22 and 2020-21 (baseline) values

UMBC 1st-yr FTIC Retention



Note, 2020-21 is the "baseline" year for UIA reporting

UMBC 4-yr FTIC Graduation Rate

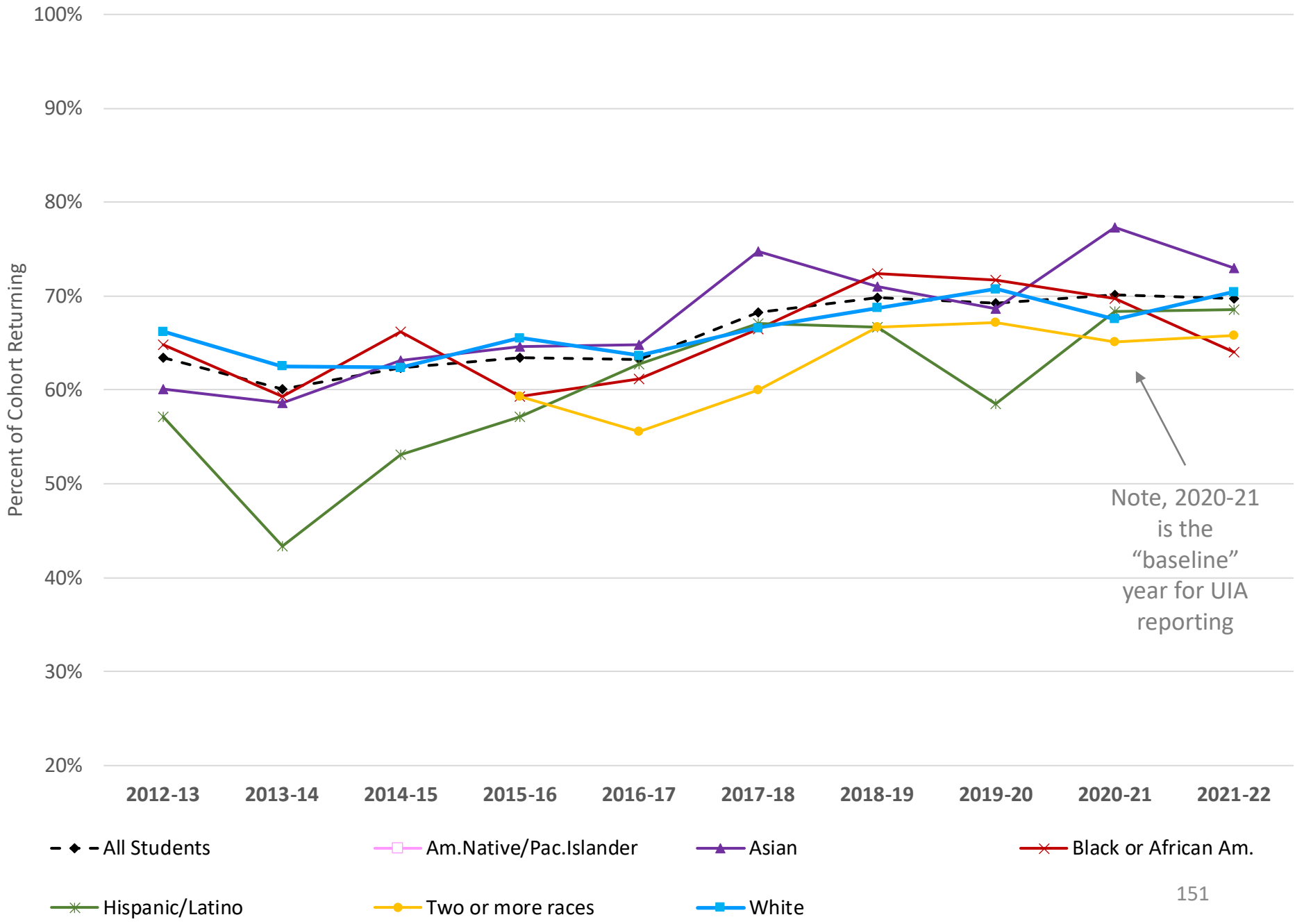


Note, 2020-21 is the "baseline" year for UIA reporting



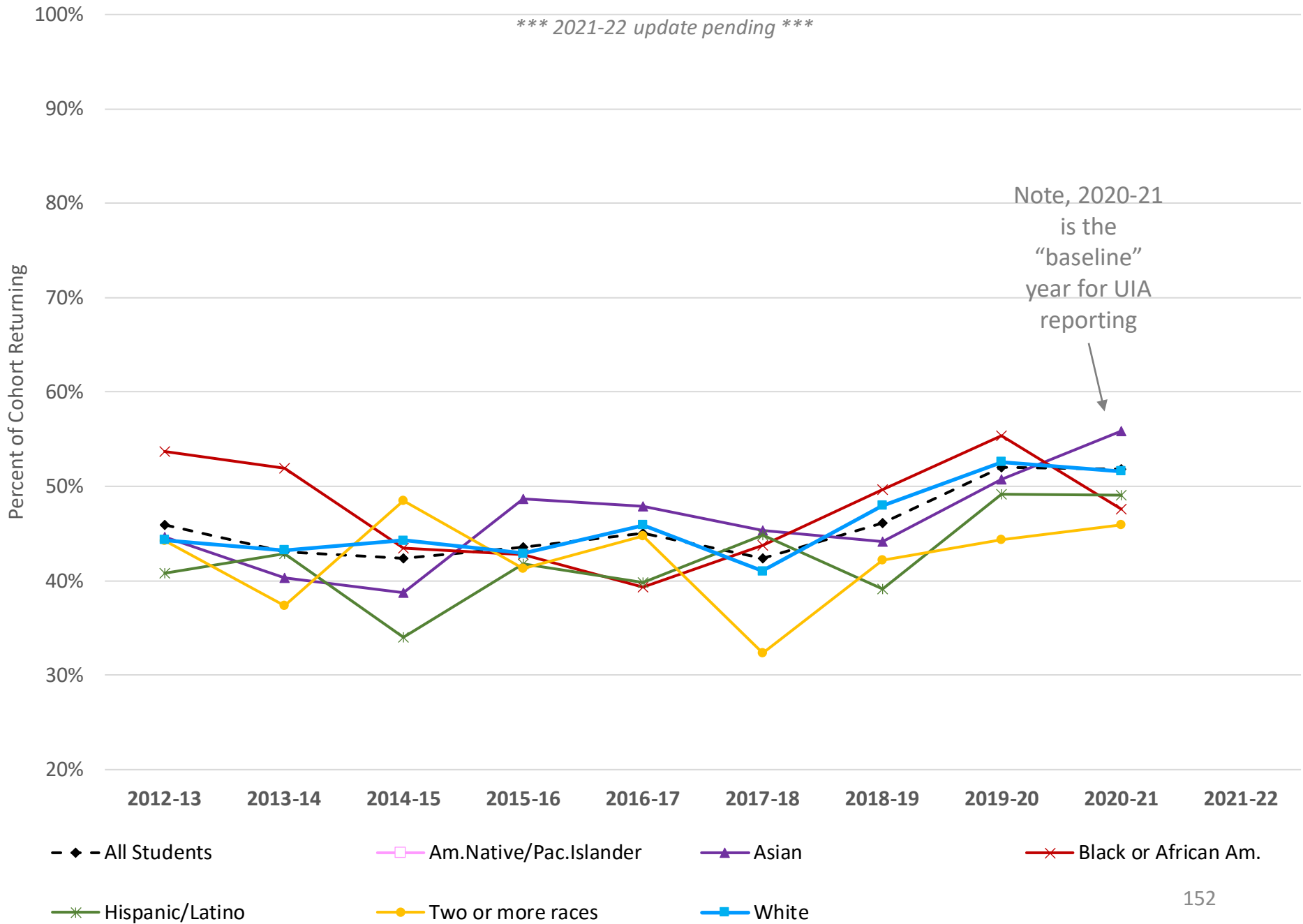
- ◆-- All Students
- Am. Native/Pac. Islander
- ▲— Asian
- ×— Black or African Am.
- *— Hispanic/Latino
- Two or more races
- White

UMBC 6-yr FTIC Graduation Rate



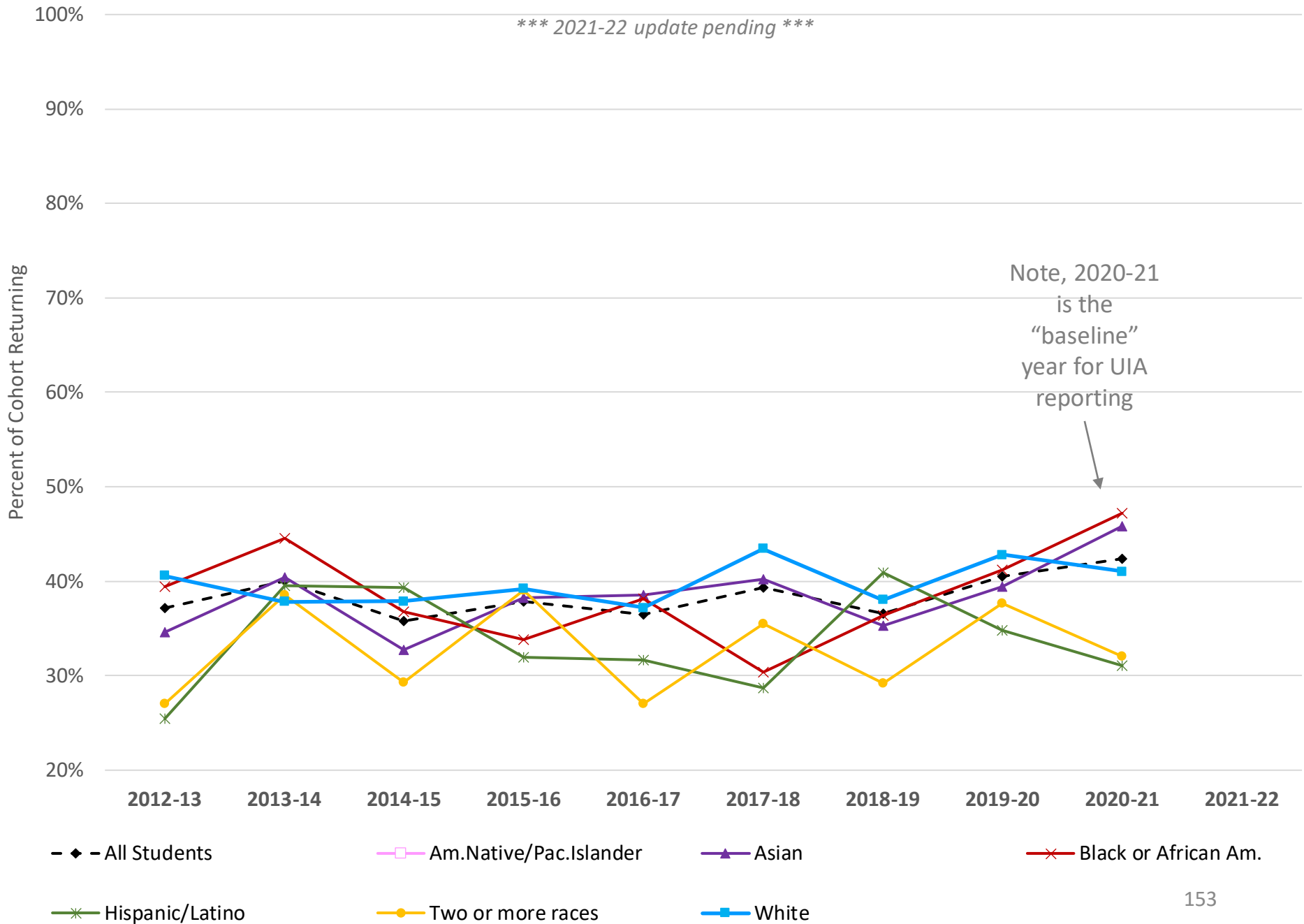
UMBC 30-hr FTIC Progress

*** 2021-22 update pending ***



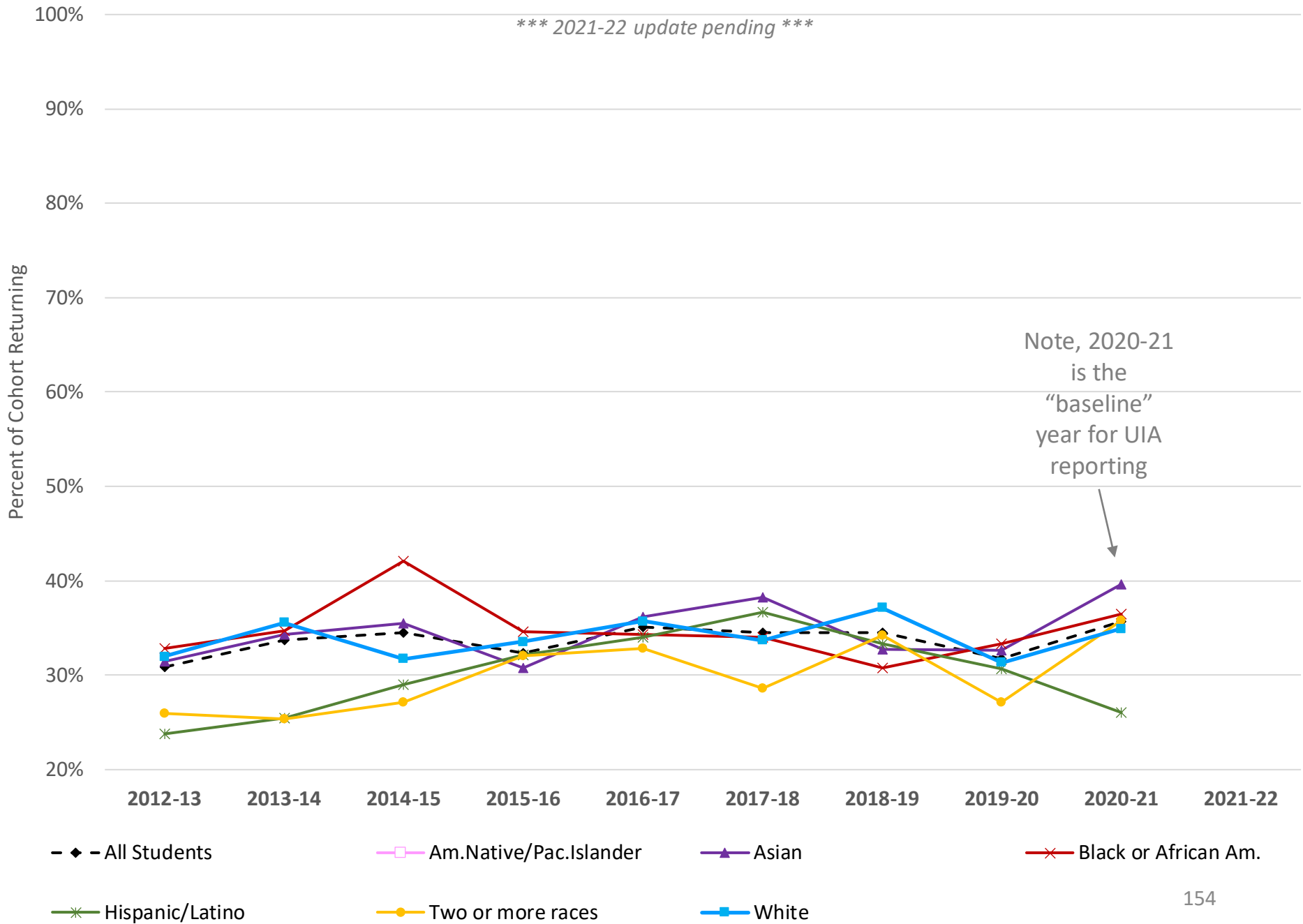
UMBC 60-hr FTIC Progress

*** 2021-22 update pending ***

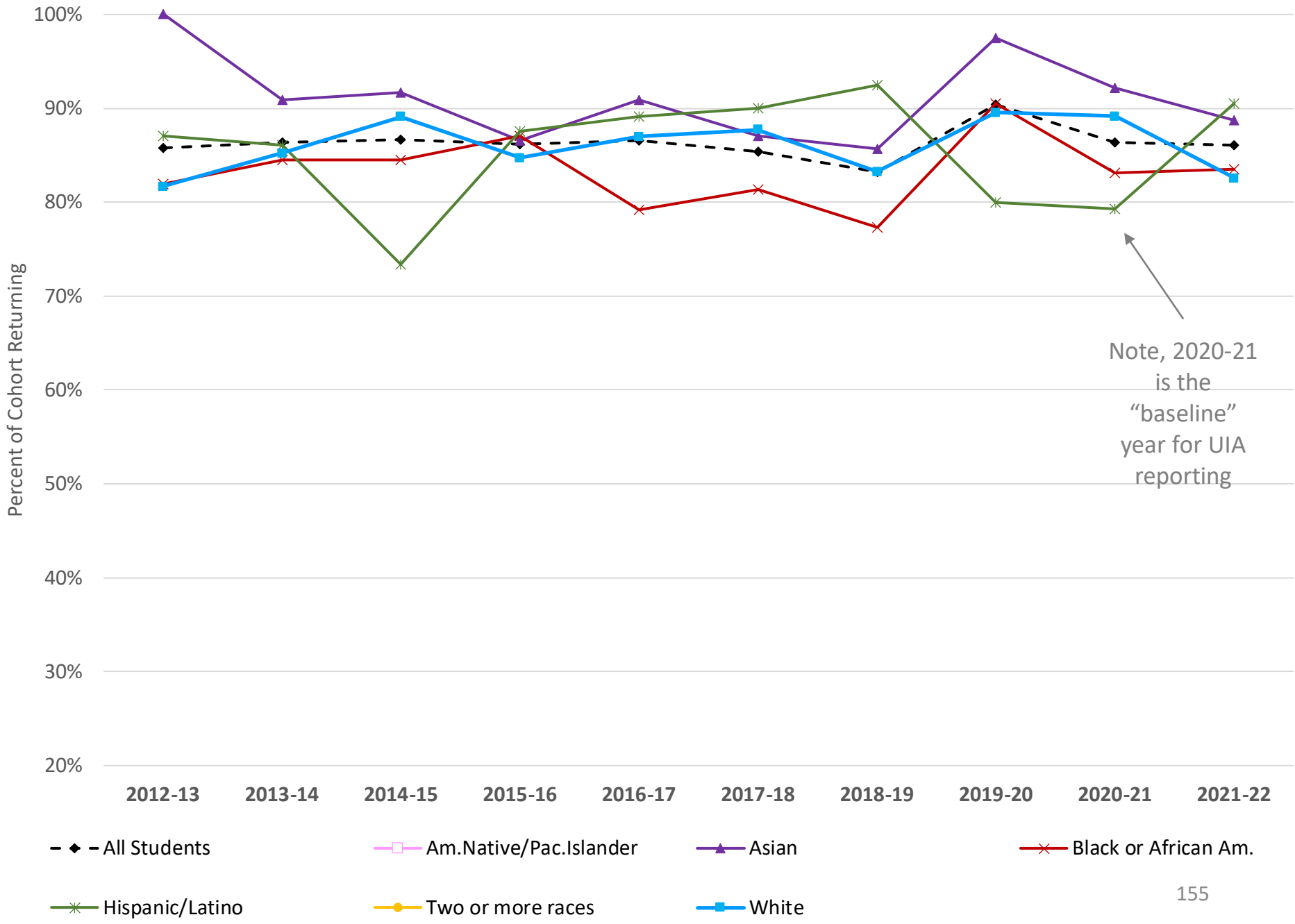


UMBC 90-hr FTIC Progress

*** 2021-22 update pending ***

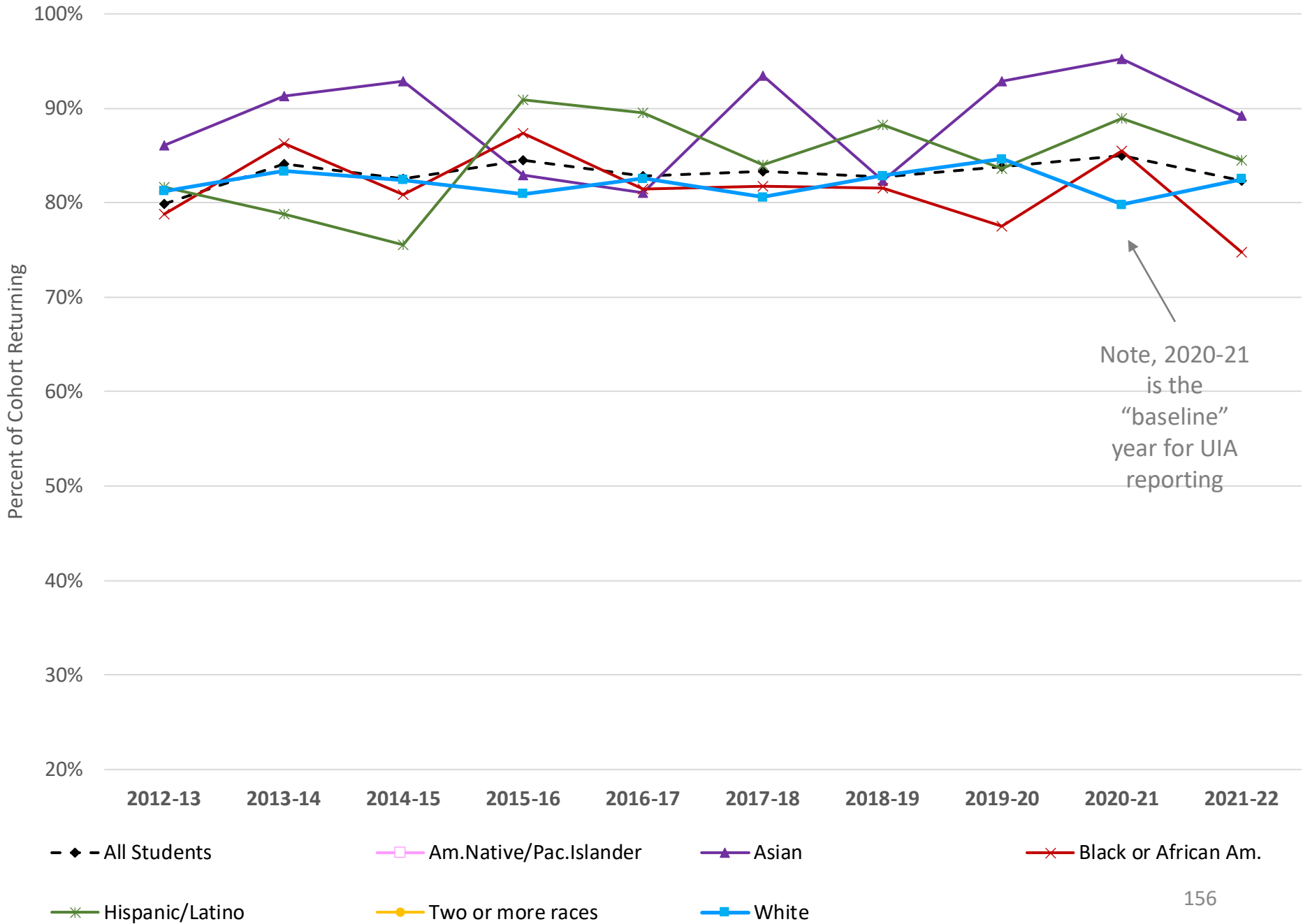


UMBC Transfer (>60 credits) Retention



Note, 2020-21 is the "baseline" year for UIA reporting

UMBC Transfer (<60 credits) Retention



Data Definitions

Graduates: Number of (unduplicated) students awarded a bachelor's degree.

Low income students: Students Pell-eligible at the time of admission.

First-year freshmen retention: For the 2012-13 baseline, this is the cohort of all full-time bachelor's degree-seeking undergraduate students who entered as freshmen in summer/fall 2012, and the percentage re-enrolled or graduated as of fall 2013.

30-hour freshmen progression: For the 2012-13 baseline, this is the cohort of all full-time bachelor's degree-seeking undergraduate students who entered as freshmen in summer/fall 2012, and the percentage who 1) completed 30 hours and 2) re-enrolled or graduated as of fall 2013.

60-hour freshmen progression: For the 2012-13 baseline, this is the cohort of all full-time bachelor's degree-seeking undergraduate students who entered as freshmen in summer/fall 2011, and the percentage who 1) completed 60 hours and 2) re-enrolled or graduated as of fall 2013.

90-hour freshmen progression: For the 2012-13 baseline, this is the cohort of all full-time bachelor's degree-seeking undergraduate students who entered as freshmen in summer/fall 2010, and the percentage who 1) completed 90 hours and 2) re-enrolled or graduated as of fall 2013.

New transfer student (60 credits or higher) retention: For the 2012-13 baseline, this is the cohort of all full-time bachelor's degree-seeking undergraduate students who entered as transfers with 60 or more credits toward the degree in summer/fall 2012, and the percentage re-enrolled or graduated as of fall 2013.

New transfer student (less than 60 credits) retention: For the 2012-13 baseline, this is the cohort of all full-time bachelor's degree-seeking undergraduate students who entered as transfers with less than 60 credits toward the degree in summer/fall 2012, and the percentage re-enrolled or graduated as of fall 2013.

4-year graduation rate: For the 2012-13 baseline, this is the cohort of all full-time bachelor's degree-seeking undergraduate students who entered as freshmen in summer/fall 2009 and the percentage who completed within 100% of normal time or by August 31, 2013.

6-year graduation rate: For the 2012-13 baseline, this is the cohort of all full-time bachelor's degree-seeking undergraduate students who entered as freshmen in summer/fall 2007 and the percentage who completed within 150% of normal time or by August 31, 2013.